



Dental solutions for practices and laboratories

2024-2025 DMG Product Catalog

A smile ahead together



A young girl with long, curly, light brown hair is shown in profile, looking towards the right. She is wearing a mustard-colored, long-sleeved top with a gathered waist. An adult's hands are visible, holding her from behind and supporting her. The adult is wearing a light-colored, ribbed sweater and a dark watch with a light face. The background is bright and out of focus, suggesting an indoor setting with large windows. The overall mood is warm and affectionate.

**A smile ahead
together**



Shaping dental progress together

Advancements in dentistry and dental technology benefit us all. And, for decades, in close cooperation with our customers, DMG has been actively involved in shaping this process. We strive to provide optimized solutions and validated workflows that make daily life easier and more efficient for dental practices and laboratories.

Investing in the future of dentistry

We're passionate about research and development and dedicated to developing the exciting areas of digitization, modern restorative treatments, prevention, and early intervention.

Proven and trusted quality

All of our products have been produced, rigorously controlled, and certified with care in Hamburg, Germany, resulting in premium products you can rely on.

Education, content and dialogue

Follow us on all major social platforms and visit our websites for:

- product information at [dmg-america.com](https://www.dmg-america.com)
- education and content at [dmg-connect.com](https://www.dmg-connect.com)

We look forward to shaping the future of dentistry, together.

↷ Honigum Pro ↷ StatusBlue

↷ LuxaBite ↷ LuxaFlow Ultra ↷ LuxaCrown

↷ Luxatemp Ultra ↷ Ecosite

↷ O-Bite ↷ Icon ↷ LuxaBond

↷ LuxaCore Z Dual ↷ LuxaPrint

↷ DentaMile ↷ TempoCem ID

↷ PermaCem 2.0 ↷ LuxaPost

↷ LuxaGlaze ↷ Ionosit Baseline

↷ MiniDam  Kolorz ↷ Vitique

Table of Contents

Digital workflows

Software		Resins	
DentaMile connect	9	LuxaPrint Ortho Plus	14
Hardware		LuxaPrint Ortho	14
DMG 3Demax	10	LuxaPrint Ortho Flex	15
DMG 3Dewash	10	LuxaPrint Model	15
DMG 3Decure	11	LuxaPrint Tray	16
DentaMile Desk MC-5	11		
DentaMile Wash MC	12		
DentaMile Cure MC	12		
DentaMile Lab 5	13		
DentaMile Lab 5 Pro	13		

DentaMile Desk MC System

See pages 11-12

New!



Prevention and early intervention

Prevention

Kolorz ClearShield 5% Sodium Fluoride Varnish	19
Kolorz Prophylaxis Paste	19
Kolorz Sixty-Second Fluoride Foam	20
Kolorz Sixty-Second Fluoride Gel	20
Kolorz Neutral Fluoride Foam	21
Kolorz Topical Anesthetic Gel	21

Early Intervention

Icon Proximal	22
Icon Smooth Surface	22
Icon Etch Refill	23
MiniDam	23

Direct composite fillings

Composites

Ecosite Elements	25
Ecosite One	26
Ecosite Bulk Fill	26

Baseliner

Ionosit Baseliner	27
-------------------	----

Bonding Agents

LuxaBond Total Etch	27
Ecosite Bond	28

Etching Gel

40% Etch Gel	28
--------------	----

Core materials

Core build-ups

LuxaCore Z Dual	30
-----------------	----

Root Posts

LuxaPost	30
Spirapost	31

New!

Ecosite Elements and Ecosite One

See pages 25-26



Impression

Precision Impression

Honigum Pro Light	33
Honigum Pro Mono	33
Honigum Pro Heavy	34
Honigum Pro Putty	34
Honigum Light	35
Honigum Mono	35
Honigum Heavy	36
StatusBlue	36
Temp Tabs	37

Adhesive

DMG Tray Adhesive	37
-------------------	----

Bite Registration Material

LuxaBite	38
O-Bite	38

Small Equipment

MixStar eMotion Machine	39
-------------------------	----

Temporary care

Temporary

Luxatemp Ultra	41
Luxatemp Plus	41
Luxatemp Fluorescence	42
LuxaCrown	42

Repair/Add-On Temporary Materials

LuxaFlow Ultra	43
LuxaFlow	43

Glaze

LuxaGlaze	44
-----------	----

Temporary Cementation

TempoCem ID	44
TempoCem NE	45
TempoCem	45

Permanent care

Permanent Cementation

PermaCem 2.0	47
PermaCem Dual	47
Vitique	48
Vitique Silane	48

Amalgam Alloys and Equipment

Amalgam Alloys	49
Variable Speed Amalgamator	50

Dispensers

Automix Dispensers	53
Safetip Dispensers	53
Safetip Dispensers Pro	53

Accessories

Zekrya Gingival Protector	57
I.B. Brushes	57
Additional Accessories	58



DMG DentaMile: 3D printing, your way!

Whether you're just beginning or already experienced in 3D, DMG DentaMile makes it easier than ever to take advantage of dental 3D printing. Our digital solutions and workflows allow for printing and/or connecting, with a lab or practice.

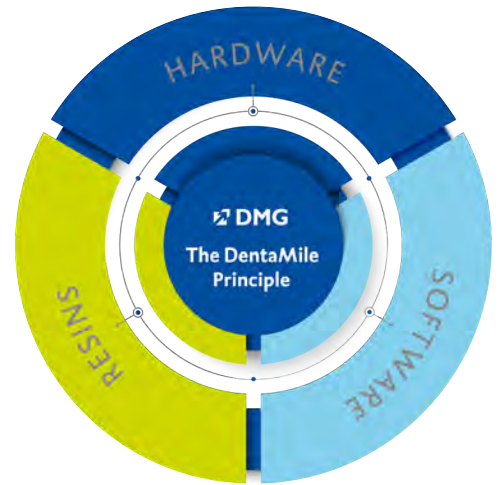
DentaMile Solutions: Fast. Intuitive. Validated.

Flexible, **fast** and **well** connected

With DMG DentaMile, you can choose your path to dental 3D printing.

Looking to manufacture bite splints, dental models or bleaching trays quickly, easily and efficiently with 3D printing? With the DentaMile connect software and validated workflows, it's never been easier. You can design and print the objects yourself or delegate to a network partner.

The DentaMile network opens up new and economically convincing possibilities.



3D from a single source

The DMG DentaMile portfolio offers modern 3D dental printing components from a single source.

From the award-winning, cloud-based software, DentaMile connect, with high-performance 3D printers and post-processing units, to high-quality materials for a wide variety of applications, DMG provides a completely integrated approach.

Ask Your DMG
Sales Representative



DentaMile connect: the award-winning software that overcomes technical barriers

DentaMile connect enables easy and efficient networking for all users, instruments and technologies involved in the production process, without spatial or technical barriers. The cloud-based software developed by DMG simplifies 3D printing so that the technology can easily be integrated into everyday work.

DentaMile connect ensures a secure and validated medical device production workflow with maximum data security. Errors are minimized and new applications are easily accessible without additional technical effort.

For this achievement, DentaMile connect received the 2020 German Innovation Award.



3D printing, your way: flexible DentaMile connect options

Printing your own 3D models? Networking with a dentist or a partner laboratory? Just scanning or designing digital splints? You can be a part of the digital workflow – even without your own 3D printer. The flexible options of DentaMile connect software offers you 4 license options: Creator, Creator Plus, Designer, and Producer. You decide what you want to do – and which license is right for your needs.

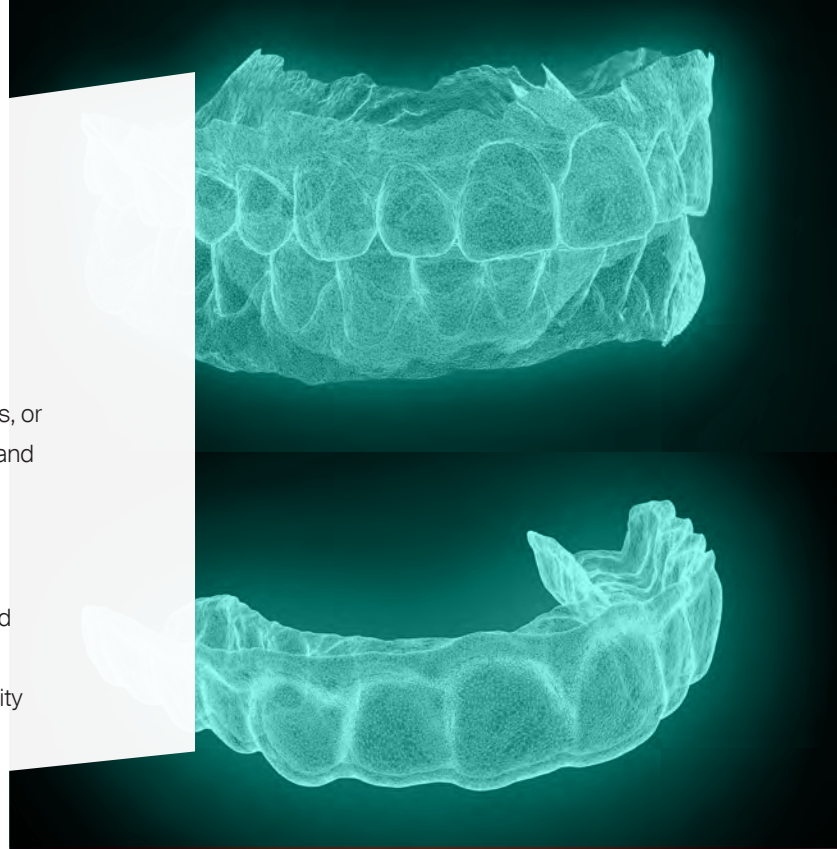
- Cloud-based: access anywhere
- "Smart Connectivity" for networking entire systems
- Control of all processing and fabrication procedures with one software platform: designing, nesting, slicing, and printing
- Intuitive, easy to use
- Flexible: four license options, depending on your individual needs



Validated and efficient: DentaMile workflows for bleaching trays and splints

Want to quickly and efficiently produce custom bleaching trays, or bite trays using 3D printing? No problem. DentaMile connect and the validated DentaMile solution help you optimize workflows and achieve even more precise results.

The holistic approach takes into account all process steps and components involved. Handling is made as user-friendly as possible. The validated processes guarantee the reliable quality of the printed items.



DentaMile workflows: tangible advantages for practice and laboratory



Easier work

Create printed items in just a few steps, with simple, intuitive handling. Precise design becomes easier than ever.



Higher work efficiency, more free capacities

With 3D printing, objects can be produced and reproduced as desired with just a few mouse clicks. The digital workflows also help to avoid the time-consuming process of sending models.



Save time and money

The lean workflows ensure high efficiency. Many steps can be delegated. A significant amount of work and material costs are saved in comparison to the conventional method of production.



Benefit from being well-networked – with or without your own 3D printer

You decide how to participate in the digital workflow - even without your printer. Do you want to successfully network and delegate, or receive print jobs? No problem.



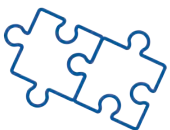
Smooth collaboration between the dental clinic and the laboratory

The DentaMile connect software and its workflows are cloud-based. This makes the exchange between all parties involved faster, easier and spatially independent.



Easy uploading and transfer of data

With the File Transfer function, STL files can be quickly and easily uploaded and downloaded in a secured environment - either individually, or as a package with assignment to a specific case.



Compatible with existing digital workflows

The DentaMile workflows are designed to be open. Existing design software or hardware components can be easily integrated into the model workflow, for example.



3D from a single source, including material

The DMG DentaMile portfolio comprises all components for a validated digital workflow that is suitable for everyday life. Coordinate with the right materials, high-performance 3D printers and post-processing units from a single source.



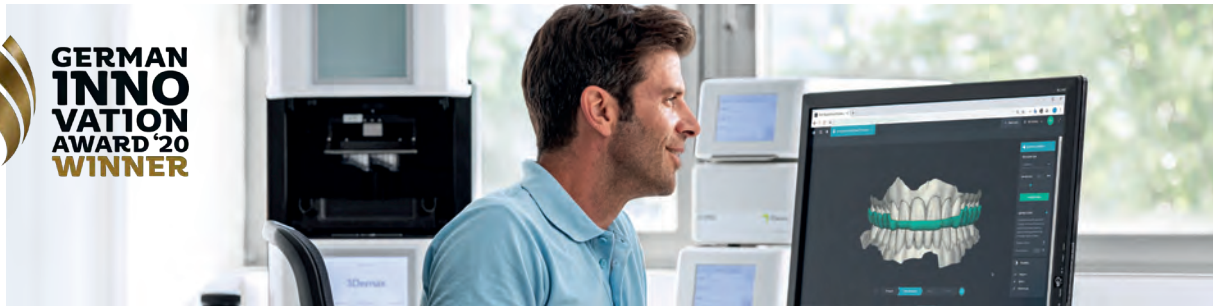
Digital workflow

Software

Hardware

Resins

DentaMile connect







The cloud-based software that overcomes technical barriers, connects dentists and laboratories and promotes collaboration!

Thanks to DentaMile connect, 3D printing has been simplified to such a degree that the technology can be fully incorporated into everyday working environments – from dental practices to dental laboratories.

Product benefits

- Cloud-based – can be used from any location
- No software installation needed
- Get started immediately
- Easy to learn
- Networking of all parties involved in the production process
- Easy delegation of tasks
- Always up to date

DentaMile connect license options and features

				 <small>Recommended</small>
Features included	Creator	Creator Plus	Designer	Producer
	Dentist	Dentist Connects with Labs	Digital Designers; Lab	Labs and Dentist
Create patient data and upload STL files	✓	✓	✓	✓
Design workflow (including virtual articulator)	✗	✗	✓	✓
Automated 3D printing	✗	✗	✗	✓
Sharing and delegating cases	✓	✓	✓	✓
Connections to other DentaMile connect users	Limited to one connection to a Designer or Producer license holder	Unlimited connections to Designer and Producer license holders	Max. 15 connections to Creator license holders; unlimited connections to Creator Plus and Producer license holders	Unlimited connections to Creator, Creator Plus and Designer license holders
Cloud storage	5 GB	5 GB	5 GB	5 GB
Free updates	✓	✓	✓	✓
Service and support	✓	✓	✓	✓

Packaging

DMG DentaMile connect – Creator	# 170904
DMG DentaMile connect – Creator Plus	# 170905
DMG DentaMile connect – Designer	# 170906
DMG DentaMile connect – Producer	# 170907

DMG 3Demax



High-precision, high-speed 3D printer for a wide range of dental 3D printing applications

TECHNICAL DATA

Size (W/D/H)	13.19 x 13.74 x 21.29 in.
Build area	5.118 x 2.95 x 3.54 in.
Max. workpiece height	3.54 in.
Native pixel resolution	+ / - 34 µm
Connections	WLAN, TCP/IP, USB
Wavelength	385 nm
Weight	approx. 72.75 lbs

Product benefits

- High-speed precision processing
- Patented “Force Feedback” technology accelerates printing by 50%
- Easy and user-friendly system
- Large build plate for multiple device production
- Software supported validated workflow
- Indicated for a wide range of 3D dental applications
- Compatible with all standard STL files
- RFID technology for automated material identification
- Validated process for reproducible printing results
- 360° Support: installation, training and technical support

Packaging

1 DMG 3Demax Printer # 171355

Accessories

1 DMG 3Demax Resin Reservoir # 170319
 1 DMG 3Demax Resin Reservoir Cover # 170320
 1 DMG 3Demax Resin Reservoir Storage Cabinet # 170333
 1 DMG 3Demax Build Platform # 170322

DMG 3Dewash



The DMG 3Dewash is a fully integrated unit that is designed for the washing of 3D printed devices using a DLP process. The pre-set programs systematically wash the remaining non-polymerized resin from the dental application

TECHNICAL DATA

Size (W/D/H)	9.05 x 17.71 x 10.62 in.
Volume	5.11 x 2.95 x 2.36 in
Working time	4-8 minutes, depending on material
Cleaning agent	isopropanol or methyl alcohol, depending on material
Connections	WLAN/LAN

Product benefits

- Pre-set cleaning programs in 4-8 minutes
- Perfect companion to the 3Demax, DentaMile Lab 5, and DentaMile Lab 5 Pro
- No contact with sticky resins and cleaning fluids
- Validated workflows
- Computer-controlled programs ensure the most effective use of cleaning fluids

Packaging

1 DMG 3Dewash Cleaning Unit # 171316

Accessories

3 DMG 3Dewash Cleaning Reservoir # 170340
 6 DMG 3Dewash Empty Bottle # 171343

DMG 3Decure



The DMG 3Decure is a fully integrated unit that is used for the curing of 3D resins with 360° illumination. The pre-set programs lock in the printed device's mechanical properties, ensuring proper curing according to individual resin specifications

TECHNICAL DATA

Size (W/D/H)	9.05 x 14.96 x 10.62 in.
Volume	5.11 x 2.95 x 2.36 in.
Working time	depending on material
Connections	WLAN/LAN, USB

Product benefits

- Pre-set material curing programs
- Perfect companion to the 3Demax, DentaMile Lab 5, and DentaMile Lab 5 Pro
- Network connectivity
- 360° lighting
- Can be stacked with DMG 3Dewash

Packaging

1 DMG 3Decure Cure Unit # 171317

DentaMile Desk MC-5



Compact 3D printer for easy entry into digital dentistry

TECHNICAL DATA

Size (W/D/H)	11.81 x 15.74 x 16.63 in. / 35.27 lbs
Work platform	5.11 x 2.87 x 3.54 in.
Technology	DLP @ 385 nm
Native pixel resolution	68 µm
Connections	2 USB ports, 1 LAN port 1 main connection outside
Additional information	<ul style="list-style-type: none"> • 2K light engine • 5" color touch display • WLAN and LAN • High-precision image alignment and orientation correction process

Product benefits

- User-friendly system
- DentaMile connect-ready
- High precision for accurately printed devices
- Validated workflow
- Indicated for a wide range of 3D dental applications
- Compatible with all standard dental CAD programs (STL files)
- Compact design that fits anywhere

Packaging

1 DentaMile Desk MC-5 Printer # 170500

Accessories

1 DentaMile Desk MC-5 Resin Reservoir # 170510
 1 DentaMile Desk MC-5 Magnetic Platform # 170511
 1 DentaMile Desk MC-5 Flex Plate # 170512

DentaMile Wash MC



The DentaMile Wash MC offers a simple wash program to achieve fast, automatic cleaning of your 3D-printed devices. The generous container, magnetic mixer, and removable basket ensure isopropyl alcohol effectively cleans your devices. A perfect companion to the DentaMile Desk MC-5 printer.

TECHNICAL DATA

Size (W/D/H)	12.59 x 12.99 x 9.68 in.
Capacity	4.67 x 4.67 x 4 in.
Power supply unit	12 V, 2 A external adapter
Power supply	100-230 V, 0.3 A, 50-60 Hz
Additional information	2.4" TFT touchscreen

Packaging

1 DentaMile Wash MC

170501

DentaMile Cure MC



Equipped with dual-frequency Omni 360° technology an advanced UV LED arrangement, the DentaMile Cure MC ensures uniform curing through two wavelengths for a variety of printing resins. A perfect companion to the DentaMile Desk MC-5 printer.

TECHNICAL DATA

Capacity	5.70 x 5.70 x 4.13 in.
Heating	Eco-passive up to 60 °C
Interface	2.4" TFT touchscreen
Connection	2.4 GHz WiFi
Power supply	100-230 V, 1.2-2 A, 50-60 Hz
Additional information	<ul style="list-style-type: none"> • Color touch display • Preset exposure programs • LED technology (365 & 405 nm)

Packaging

1 DentaMile Cure MC

170502

DentaMile Lab 5



The professional printer for high volume and efficiency

TECHNICAL DATA

Size (W/D/H)	23.62 x 22.44 x 65.35 in.
Build area (L/W/H)	9.09 x 5.11 x 11.81 in.
Max. workpiece height	11.81 in.
Native pixel resolution	+ / - 30 µm
Connections	WLAN, TCP/IP, USB
Weight	242.50 lbs
Resolution	4K (3840 x 2160 px) with 385 nm LED
Wavelength	385 nm
Layer thickness	≥50 µm

Product benefits

- Large build area for multiple device production
- High-precision 4K light source
- RFID technology for automated material identification
- Fast print speeds via Force Feedback technology
- Heating of print chamber up to 95° F / 35° C
- Compatible with standard dental CAD software (STL files)
- Large status LED bar
- Automatic hands-free hood opening
- Intelligent connectivity with post-processing units
- Software-supported, validated workflow for reproducible dental devices

Packaging

1 DentaMile Lab 5 # 170352

Accessories

1 DMG DentaMile Lab 5 Reservoir Tank # 170401
 1 DMG DentaMile Lab 5 Reservoir Tank Cover # 170402
 1 DMG DentaMile Lab 5 Reservoir Storage Box # 170403
 1 DMG DentaMile Lab 5 Build Platform # 170404

DentaMile Lab 5 Pro



Reliable automation for high volume printing

TECHNICAL DATA

Size (W/D/H)	23.62 x 22.44 x 65.35 in.
Build area (L/W/H)	9.09 x 5.11 x 3.93 in.
Max. workpiece height	3.93 in.
Native pixel resolution	+ / - 30 µm
Connections	WLAN, TCP/IP, USB
Weight	263.55 lbs
Resolution	4K (3840 x 2160 px) with 385 nm LED
Wavelength	385 nm
Layer thickness	≥50 µm

Product benefits

In addition to all the DentaMile Lab 5 product benefits, the automated DentaMile Lab 5 Pro is equipped with both an automated separation module (ASM) and resin reservoir refill, following print jobs, parts are automatically separated from the build platform and deposited in a collection basket. The resin reservoir is refilled and ready for your next print job, automatically.

Specialty

- Automatic separation of the finished printed devices (ASM)
- Automatic resin reservoir refill

Packaging

1 DentaMile Lab 5 Pro # 170353

Accessories

1 DMG DentaMile Lab 5 Reservoir Tank # 170401
 1 DMG DentaMile Lab 5 Reservoir Tank Cover # 170402
 1 DMG DentaMile Lab 5 Reservoir Storage Box # 170403
 1 DMG DentaMile Lab 5 Build Platform # 170404
 1 DMG DentaMile Lab 5 Pro Cutting Knife # 170410
 1 DMG DentaMile Lab 5 Pro Catch Basket # 170411
 1 DMG DentaMile Lab 5 Pro Refill Hose # 170412

LuxaPrint Ortho Plus



Light-curing 3D print resin

Indicated for the manufacturing of orthodontic and dental appliances such as mouthguards, nightguards, splints and tooth positioners. Classified as a Class II medical device.

Shade: Transparent

Product benefits

- Transparent
- Exact fit
- Not brittle



Bottle

385 nm

1 5000gm Bottle, Transparent	# 171216
1 2000gm Bottle, Transparent	# 171215
1 1000gm Bottle, Transparent	# 171211
1 500gm Bottle, Transparent	# 171210
1 200gm Bottle, Transparent	# 171259

LuxaPrint Ortho



Light-curing 3D print resin

A light-cured 3D printer resin that is indicated for the fabrication of highly precise surgical guides and splints. Classified as a Class I medical device.

Shade: Transparent

Product benefits

- Highly precise for an exact fit of the surgical guide
- 99% transparency for perfect control
- Unobstructed view of the surgical field
- Autoclavable



Bottle

385 nm

1 5000gm Bottle, Transparent	# 171218
1 2000gm Bottle, Transparent	# 171217
1 1000gm Bottle, Transparent	# 171207
1 500gm Bottle, Transparent	# 171206
1 200gm Bottle, Transparent	# 171256

LuxaPrint Ortho Flex



Light-curing 3D print resin

A biocompatible material for the additive production of flexible splints like bleaching trays or indirect bonding trays. Classified as a Class I medical device.

Shade: Transparent

Product benefits

- Versatile
- Optimal elasticity
- Highly tear-resistant
- Near-natural transparency
- Easy to clean



Bottle

385 nm

1 5000gm Bottle, Transparent	# 171284
1 2000gm Bottle, Transparent	# 171281
1 1000gm Bottle, Transparent	# 171252
1 500gm Bottle, Transparent	# 171250
1 200gm Bottle, Transparent	# 171273

LuxaPrint Model



Light-curing 3D print resin

Indicated for the fabrication of highly precise and esthetically demanding 3D printed models. It is suitable for the production of thermoformed splints.

Shade: Beige, Grey, Ivory, Transparent

Product benefits

- Fine, smooth surface structure delivers the highest detail
- Dimensionally stable
- Highly precise for esthetically demanding models



Bottle

385 nm / 405 nm

1 2000gm Bottle, Beige	# 171265
1 1000gm Bottle, Beige	# 171201
1 500gm Bottle, Beige	# 171200
1 200gm Bottle, Beige	# 171264
1 2000gm Bottle, Grey	# 171263
1 1000gm Bottle, Grey	# 171293
1 500gm Bottle, Grey	# 171292
1 200gm Bottle, Grey	# 171294
1 2000gm Bottle, Ivory	# 171279
1 1000gm Bottle, Ivory	# 171276
1 500gm Bottle, Ivory	# 171274
1 200gm Bottle, Ivory	# 171272
1 5000gm Bottle, Transparent	# 171271
1 2000gm Bottle, Transparent	# 171270
1 1000gm Bottle, Transparent	# 171269
1 500gm Bottle, Transparent	# 171268
1 200gm Bottle, Transparent	# 171267

LuxaPrint Tray



Light-curing 3D print resin

Suitable for all types of 3D printed custom impression trays. Classified as a Class I medical device.

Shade: Turquoise

Product benefits

- Quick and easy to print
- Extremely stable for distortion-free impressions
- Exact fit



Bottle

358 nm / 405 nm

1 5000gm Bottle, Turquoise	# 171261
1 2000gm Bottle, Turquoise	# 171258
1 1000gm Bottle, Turquoise	# 171205
1 500gm Bottle, Turquoise	# 171204
1 200gm Bottle, Turquoise	# 171266





Prevention and early intervention

Hygiene

Infiltration

Kolorz® ClearShield™ 5% Sodium Fluoride Varnish



Clear, great tasting fluoride varnish

With Xylitol and fluoride, ClearShield smiles look fantastic. The gluten-free varnish goes on clear with no embarrassing discoloration or yellow teeth, and hygienically sealed single-dose packages eliminates cross-contamination, making preparation and clean-up fast and easy.

The proprietary flavorings were developed in consultation with food industry professionals and are guaranteed to taste better than any other brand. Kolorz' yummy Watermelon, Bubblegum, Cookie Dough and Caramel flavors make treatment a picnic for kids, and Mint will especially be appreciated by adults.

Product benefits

- Contains xylitol and fluoride (22,600 ppm)
- Clump-free consistency
- Gluten, aspartame and saccharin free
- Goes on clear, dries clear
- Five great flavors
- Easy to use
- Single-dose units
- Guaranteed to taste better



Pack

200 Single-dose units	
Watermelon	# 799502
Bubblegum	# 799504
Mint	# 799507
Cookie Dough	# 799513
Caramel	# 799517
35 Single-dose units	
Watermelon	# 799501
Bubblegum	# 799503
Mint	# 799506
Cookie Dough	# 799512
Caramel	# 799516

Kolorz® Prophylaxis Paste



For a perfect cleaning and polishing effect

Splatter-free Kolorz Prophylaxis Paste removes discolorations, plaque, and polishes tooth surfaces for immediate results!

Its four different grits – X-tra coarse (only available in Mint), coarse, medium and fine, conveniently allow you to adjust the degree of abrasion.

Kolorz 1.23% APF fluoride Prophylaxis Paste is gentle and does not cause any unnecessary abrasion of tooth structure or restored surfaces.

Unlike other prophy pastes, Kolorz has an advanced gluten-free formula and uses only non-caloric natural sweeteners, like Xylitol.



Comes automatically shrinkwrapped with a free package!

Pack

200 Single-dose units	
Triple Mint Fine	# 788401
Triple Mint Medium	# 788402
Triple Mint Coarse	# 788403
Triple Mint X-tra Coarse	# 788404
Cherry Burst Medium	# 788406
Cherry Burst Course	# 788407
Assorted Cinnamon & Mint Medium	# 788415
Assorted Cinnamon & Mint Course	# 788416
Bubblegum Fine	# 788417
100 Single-dose units Cotton Candy	
100 Single-dose units Blue Raspberry	
Carnival Pak Fine	# 788408
Carnival Pak Medium	# 788409

Kolorz® Sixty-Second Fluoride Foam



Available in the U.S. only.

Protection in a foam

Patients love the smooth foam consistency of Kolorz Sixty-Second Fluoride Foam. The acidulated phosphate formula contains just the right percentage of Fluoride Ion - 1.23% to be exact, and comes in four great-tasting flavors that are guaranteed to taste better than any other brand. Plus, the foams contain non-caloric natural sweeteners and Xylitol.



Pack

- 1 Can @ 4.4oz Foam
- Triple Mint # 766201
- Cherry Cheesecake # 766202
- Cotton Candy # 766203
- Blue Raspberry # 766204

Kolorz® Sixty-Second Fluoride Gel



Available in the U.S. only.

Protection in a gel

Kolorz Sixty-Second Fluoride Gel has a thixotropic formula that won't run under bite pressure. Available in three great-tasting flavors, the gels are also aspartame, gluten and saccharin free. With an acidulated phosphate formulation of 1.23% Fluoride Ions, protection is instantaneous, easy and promotes remineralization.



Pack

- 1 Bottle @ 16oz Gel
- Triple Mint # 777301
- Cotton Candy # 777303
- Blue Raspberry # 777304

Kolorz® Neutral Fluoride Foam



Available in the U.S. only.

2% Sodium Fluoride with a neutral pH
 Kolorz Neutral Fluoride Foam is easy to apply and forms a protective layer on tooth enamel surfaces, promoting remineralization, and reducing the chances of demineralization.

The neutral pH formula contains 2% Sodium Fluoride (0.9% Fluoride Ion) and has a great Kolorz Triple Mint flavor. Plus, the smooth foam consistency makes fluoride treatments a breeze for patients!



Pack
 1 Can @ 4.4oz Foam - Triple Mint # 766205

Kolorz® Topical Anesthetic Gel



Available in the U.S. only.

Maximum strength formulation for fast pain relief

The quick-onset of Kolorz Topical Anesthetic Gel provides fast pain relief for dental procedures with no bitter aftertaste. The 20% maximum strength benzocaine formula provides temporary pain relief during periodontal curettage, local injections, intra-oral scaling, root planing and other procedures. Plus, patients love the great-tasting flavors like Triple Mint, Cherry Cheesecake, Cotton Candy, Blue Raspberry, and Piña Colada.



Pack
 1 Jar @ 1oz Gel
 Triple Mint # 755101
 Cherry Burst # 755102
 Cotton Candy # 755103
 Blue Raspberry # 755104
 Piña Colada # 755105

Icon Proximal



Infiltrant for the micro-invasive treatment of proximal lesions

Indication: micro-invasive treatment of early, non-cavitated caries (up to the first third of dentin) in the proximal area.

Product benefits

- Halts the progression of proximal incipient caries
- No drilling or anesthesia
- Easily treat hard-to-reach areas
- No unnecessary loss of healthy tooth structure
- Prolongs the life expectancy of the tooth
- One quick patient visit



Icon Proximal Mini Kit # 220400
2 Patient Packs, each including:
1 Syringe @ 0.30ml Icon Etch
1 Syringe @ 0.45ml Icon Dry
1 Syringe @ 0.45ml Icon Infiltrant
6 Proximal Tips
1 Luer-Lock Tip
4 Dental Wedges

Icon Proximal Cube # 220401
7 Patient Packs, each including:
1 Syringe @ 0.30ml Icon Etch
1 Syringe @ 0.45ml Icon Dry
1 Syringe @ 0.45ml Icon Infiltrant
6 Proximal Tips
1 Luer-Lock Tip
4 Dental Wedges

Icon Smooth Surface



Infiltrant for the micro-invasive treatment of white spot lesions

Indications: micro-invasive treatment of non-cavitated carious enamel lesions and the esthetic treatment of mild-to-moderate fluorosis.

Product benefits

- Esthetic treatment of white spots
- Restores to match natural tooth shade
- Preservation of healthy tooth structure
- No drilling or anesthesia
- One quick patient visit



Icon Smooth Surface Mini Kit # 220402
2 Patient Packs, each including:
1 Syringe @ 0.45ml Icon Etch
1 Syringe @ 0.45ml Icon Dry
1 Syringe @ 0.45ml Icon Infiltrant
6 Smooth Surface Tips
1 Luer-Lock Tip

Icon Smooth Surface Cube # 220403
7 Patient Packs, each including:
1 Syringe @ 0.45ml Icon Etch
1 Syringe @ 0.45ml Icon Dry
1 Syringe @ 0.45ml Icon Infiltrant
6 Smooth Surface Tips
1 Luer-Lock Tip

Icon Etch



Icon Etch when you need it

For use with Icon Smooth Surface, for the following indications: micro-invasive treatment of non-cavitated carious enamel lesions and the esthetic treatment of mild-to-moderate fluorosis.

Product benefits

- Esthetic treatment of white spots
- Restores to match natural tooth shade
- Preservation of healthy tooth structure
- No drilling or anesthesia
- One quick patient visit



Refill pack

3 Syringes @ 0.45ml Icon Etch
15 Smooth Surface Tips

220385

DMG MiniDam



Silicone gingiva protection

Indications: silicone protection to maintain a relatively dry environment in the proximal area between two teeth to protect the gingiva against dental materials.

Product benefits

- Reliable protection of the proximal area
- Quick and easy
- Comfortable for patients
- Secure hold without clamps
- Latex-free



Pack

20 pcs

220381



Direct composite fillings

Composites

Baseliner

Bonding agents

Ecosite Elements



Ecosite Elements is a universal nanohybrid composite with a compact range of shades and opacities that's precisely engineered and reliably efficient for perfect anterior and posterior results!

Indications: Ecosite Elements, shades: BL1, B1, A1, A2, A3, A3.5, EB, EL, EM, ED - Direct restorations in permanent and deciduous teeth and core build-ups. Ecosite Elements, shades: OA2 and INC - Small fillings of cavity class III, IV and V, direct restorations in deciduous teeth, base material, and fissure sealing. Ecosite Elements, shades: W and B - Customization of composite restorations.

Product benefits

- Compact shade selection; covers the full VITA range
- Quick and easy shade matching
- Full range of anterior and posterior indications
- Ideal handling with Push-and-Flow effect
- Optimal adaptation to cavity walls; no bubbles or cracks
- DMG-NC-1 material technology for even particle distribution
- High polishability



Refill pack

16 Safetips @ 0.25gm	
Ecosite Elements Pure, Shade A1	# 222851
Ecosite Elements Pure, Shade A2	# 222821
Ecosite Elements Pure, Shade A3	# 222822
Ecosite Elements Pure, Shade A3.5	# 222823
Ecosite Elements Pure, Shade BL1	# 222850
Ecosite Elements Pure, Shade B1	# 222820
Ecosite Elements Layer, Shade Enamel Bleach (EB)	# 222825
Ecosite Elements Layer, Shade Enamel Light (EL)	# 222826
Ecosite Elements Layer, Shade Enamel Medium (EM)	# 222827
Ecosite Elements Layer, Shade Enamel Dark (ED)	# 222828
1 Syringe @ 4gm	
Ecosite Elements Pure, Shade A1	# 222841
Ecosite Elements Pure, Shade A2	# 222808
Ecosite Elements Pure, Shade A3	# 222809
Ecosite Elements Pure, Shade A3.5	# 222810
Ecosite Elements Pure, Shade BL1	# 222840

Ecosite Elements Pure, Shade B1	# 222807
Ecosite Elements Layer, Shade Enamel Bleach (EB)	# 222812
Ecosite Elements Layer, Shade Enamel Light (EL)	# 222813
Ecosite Elements Layer, Shade Enamel Medium (EM)	# 222814
Ecosite Elements Layer, Shade Enamel Dark (ED)	# 222815
1 Syringe @ 2gm	
Ecosite Elements Highlight, Shade Incisal (INC)	# 222816
Ecosite Elements Highlight, Shade A2 Opaque (OA2)	# 222817
Ecosite Elements Highlight, Shade White (W)	# 222818
Ecosite Elements Highlight, Shade Brown (B)	# 222819

Accessories

1 Safetip Dispenser Pro	# 222829
1 Safetip Dispenser	# 220600
1 Ecosite Elements Shade Guide Layer	# 220835
1 Ecosite Elements Shade Guide Bleach	# 220836

Ecosite One



One-shade nano-hybrid composite for the posterior region

Indications: fillings in the posterior region (classes I and II including replacement of individual cusps), class V fillings (cervical caries, root erosion, conical defects), core build-ups, deciduous teeth fillings, and extended crack fillings on molars and premolars.

Product benefits

- Esthetic and accurate color matching using only one shade
- High stain resistance for long-term color stability* (*data on file)
- Valuable time savings thanks to 3mm curing depth and 10 sec rapid cure
- Push-and-Flow effect for excellent handling
- Effortless polishability for a high-gloss finish
- Low shrinkage stress



Pack

- | | |
|----------------------|----------|
| 1 Syringe @ 4gm | # 222900 |
| 16 Safetips @ 0.25gm | # 222901 |

Accessories

- | | |
|-------------------------|----------|
| 1 Safetip Dispenser | # 220600 |
| 1 Safetip Dispenser Pro | # 222829 |

Ecosite Bulk Fill



Packable nano-hybrid bulk fill composite

Indications: fillings in the posterior region (classes I and II including replacement of individual cusps), class V fillings (cervical caries, root erosion, conical defects), core build-ups, deciduous teeth fillings, and extended crack fillings on molars and premolars.

Product benefits

- Fill up to 5mm – no capping layer needed
- One quick 20-second light cure
- Excellent adaptation, packability, and handling
- High polishability for superior esthetics
- Low shrinkage stress
- Does not stick to instruments
- Releases fluoride



Pack

- | | |
|----------------------|----------|
| 16 Safetips @ 0.25gm | # 220756 |
| Shade Universal | |
| 1 Syringe @ 4gm | # 220753 |
| Shade Universal | |

Accessories

- | | |
|-------------------------|----------|
| 1 Safetip Dispenser | # 220600 |
| 1 Safetip Dispenser Pro | # 222829 |

Ionosit Baseline



Light-cure lining material for improved longevity of restorations

Indications: baseliner material for composite restorations, and for blocking out undercuts.

Product benefits

- Gap-free restorations
- Low polymerization shrinkage
- Continuous fluoride release
- Antibacterial properties (due to zinc content)
- No complicated handmixing
- Protects the pulp
- Seals the dentin tubules
- Prevents postoperative sensitivities
- Radiopaque



Pack

- 2 Syringes @ 1.5gm
- 20 Luer-Lock Tips Black # 223002

Office pack

- 2 Operator Trays. Each Contains:
- 5 Syringes @ 0.3gm
- 1 Applicator Pad # 210911

LuxaBond Total Etch



Dual-cure adhesive system with reliable bond strength

Indications: dual-cure bonding agent, in combination with the total-etch technique, on enamel and dentin for all direct and indirect techniques (i.e. complex adhesive cementations of root posts and core build-ups, inlays, onlays, crowns and bridges).

Product benefits

- Self-curing: hardens even without light
- No premature polymerization of bonding pools
- Pre-bond for quick curing of the bonding agent in the dentin: superior adhesion values, longer working time with the bonding agent
- Does not contain acetone

Speciality

Ideal for use with LuxaCore Z Dual (page 30), PermaCem 2.0 (page 47), PermaCem Dual (page 47)



Introductory Kit

- 1 Bottle @ 5ml Pre-bond
- 1 Bottle @ 5ml Bond A
- 1 Bottle @ 5ml Bond B
- 1 Syringe @ 2ml DMG Etching Gel Medium Viscosity
- 25 Endo Brushes Red
- 25 Endo Brushes Black
- 3 Luer-Lock Tips White
- 1 Mixing Palette # 212384

Accessories

- 25 Endo Brushes Red # 212385

Ecosite Bond



Light-cure universal adhesive

Indication: Light-cure, universal bonding agent for direct restorations of all cavity classes with light-cure composites, compomers and ormocers.

Product benefits

- Freedom to choose your etching mode: self-etch, total etch, selective etch
- Optimal bond strength to enamel and dentin
- Contains MDP
- Ideal for use with Ecosite Elements, Ecosite One and Ecosite Bulk Fill



Pack

1 Bottle @ 5ml Ecosite Bond
25 Single-use Brushes White

220758

40% Etch Gel



An effective etchant for tooth enamel

This 40% phosphoric acid gel for etching tooth enamel has great flow properties and a viscosity that prevents flow of acid into soft tissue, adjacent teeth and/or cementum and dentin. Its thixotropic properties won't run, rinses off cleanly and is clearly distinguishable from tooth structure.

The material is easily dispensed with disposable, angled Luer-Lock micro tips, allowing for precise and controlled placement while preventing cross contamination.

Product benefits

- 40% phosphoric acid gel
- Blue for easy identification
- Ideal retention pattern
- Optimal viscosity
- Perfect dosing and precise application



Pack

4 Syringes @ 1.2ml
20 Micro-Etch Tips

61901

Accessories

20 Micro-Etch Tips

61903



Core materials

Core build-ups

Root posts

LuxaCore Z Dual



Industry-leading core material with added Zirconia filler for core build-ups and root post cementation

Indications: core build-up, post cementation

Product benefits

- Cuts remarkably like dentin
- Added Zirconia filler for exceptionally high compressive strength
- High stability
- Patented nanotechnology prevents particle agglomeration
- Ideal flowability and handling characteristics
- Perfect properties, even when used as a post cement
- Film thickness of precision cement
- Easy to form



Pack

2 Smartmix Syringes @ 9gm, 10 Smartmix Tips	
10 Intraoral Tips Yellow	
Shade Light Opaque	# 213336
Shade A3	# 213334
Shade Blue	# 213335
1 Cartridge @ 48gm, 30 Automix Tips Yellow 1:1	
30 Intraoral Tips Yellow	
Shade Light Opaque	# 213332
Shade A3	# 213330
Shade Blue	# 213331

Accessories

1 Automix Dispenser Type 25 1:1	# 110253
35 Automix Tips Yellow 1:1 / Intraoral Tips Yellow	# 110424
50 Smartmix Tips / Intraoral Tips	# 212042

LuxaPost



Glass fiber reinforced, pre-silanzed composite root post with dentin-like flexural modulus

Indication: manufacture of a reliable retention of the core build-up in cases of insufficient tooth substance.

Product benefits

- Perfect partner for LuxaCore Z Dual: monoblock
- Dentin-like flexural modulus: reduced risk of root fracture
- Radiopaque
- Pre-silanzed
- Tapered design
- No pre-drilling required



Introductory kit

5 Posts @ 1.25mm Black	
5 Posts @ 1.375mm Purple	
5 Posts @ 1.5mm Green	
1 Drill @ 1.25mm	
1 Drill @ 1.375mm	
1 Drill @ 1.5mm	
30 Depth Marker	
1 Measuring Card	# 110780

Refill pack

5 Posts @ 1.25mm Black	# 110781
5 Posts @ 1.375mm Purple	# 110782
5 Posts @ 1.5mm Green	# 110783
1 Drill @ 1.25mm	# 110734
1 Drill @ 1.375mm	# 110735
1 Drill @ 1.5mm	# 110736

Spirapost



Self-adapting dental post with a custom fit

With patented poly-fiber strands, Spirapost naturally flexes to conform to the shape of the canal, for a custom fit for all root canal configurations. It uniquely adapts to irregularities of the canal to the removal of tooth material, is radiopaque, highly esthetic and is easy to use.



Introductory kit

- 10 Tapered Posts
- 10 Parallel Posts
- 1 #4 Gates Glidden
- 1 #5 Gates Glidden
- 1 Spirapost Ruler # 888100

Refill pack

- 10 Parallel Posts
- 1 #5 Gates Glidden # 888101
- 10 Tapered Posts
- 1 #4 Gates Glidden # 888102
- 1 Spirapost Ruler # 888103



Impression

Impression material

Bite registration material

Mixing machine

Honigum Pro Light



Precision VPS-based impression material

Indications: crown and bridge impressions, inlay and onlay impressions.

Product benefits

- Excellent flow properties
- Extraordinary stability
- Good hydrophilicity
- Captures even the finest details
- Extremely high toughness



Pack

2 Cartridges @ 50ml	
10 Automix Tips Yellow 1:1	
10 Intra-Oral Tips Yellow	
Honigum Pro Light	# 989831
Honigum Pro Light QuadFast	# 989832

Accessories

1 Automix Dispenser Type 50 1:1	# 999507
35 Automix Tips Yellow 1:1 / Intra-Oral Tips Yellow	# 110424

Honigum Pro Mono



Monophase VPS-based impression material

Indications: crown and bridge impressions, inlay, onlay and functional impressions and all types of pickup impressions (e.g. for implants).

Product benefits

- One-step precision
- Easy to remove
- Highly hydrophilic and superior flow behavior
- Precise reproduction of the preparation margin
- High tear resistance



Pack

1 Cartridge @ 380ml, 10 MixStar Tips Blue	
Honigum Pro Mono Mixstar	# 989568
4 Cartridges @ 50ml, 8 Automix and Intra-Oral Tips	
Honigum Pro Mono Automix	# 989830

Accessories

1 MixStar eMotion 230 V Int.	# 999482
50 MixStar Tips Blue	# 993334
1 Automix Dispenser Type 50 1:1	# 999507
50 Automix Tips Green 1:1	# 909400
50 Intraoral Tips Transparent	# 999490
1 Bottle @ 10ml DMG Tray Adhesive	# 999394

Honigum Pro Heavy



Precision VPS-based impression material

Indications: crown and bridge impressions, inlay and onlay impressions, all types of pickup impressions (i.e. for implants).

Product benefits

- High final hardness
- Excellent stability; does not slump or run
- Easy to remove
- Homogenous (bubble-free) material quality



Pack

1 Cartridge @ 380ml, 10 MixStar Tips Blue	
Honigum Pro Heavy	# 989537
Honigum Pro Heavy QuadFast	# 989638
4 Cartridges @ 50ml, 8 Automix Tips Green 1:1	
Honigum Pro Heavy	# 989766
Honigum Pro Heavy QuadFast	# 989838

Accessories

1 MixStar eMotion 230 V Int.	# 999482
50 MixStar Tips Blue	# 993334
1 Automix Dispenser Type 50 1:1	# 999507
50 Automix Tips Green 1:1	# 909400
1 Bottle @ 10ml DMG Tray Adhesive	# 999394

Honigum Pro Putty



Precision VPS-based impression material with a putty-like consistency

Indications: crown and bridge impressions, inlay and onlay impressions.

Product benefits

- Outstanding recovery after deformation
- Excellent dimensional stability
- Putty-like consistency
- Excellent tear strength



Pack

1 Cartridge @ 380ml, 10 MixStar Tips Blue	# 989374
---	----------

Accessories

1 MixStar eMotion 230 V Int.	# 999482
50 MixStar Tips Blue	# 993334
1 Bottle @ 10ml DMG Tray Adhesive	# 999394

Honigum Light



Precision VPS-based impression material

Indications: crown and bridge impressions, inlay and onlay impressions.

Product benefits

- Excellent flow properties
- Extraordinary stability
- Good hydrophilicity
- Precise detail reproduction



Pack

2 Cartridges @ 50ml	
10 Automix Tips Yellow 1:1	
10 Intraoral Tips	
Honigum Light	# 999831
Honigum Light QuadFast	# 999832

Economy pack

4 Cartridges @ 25ml	
16 Automix Tips Yellow 1:1	
16 Intraoral Tips Yellow	
Honigum Light	# 999539
Honigum Light QuadFast	# 999639

Accessories

1 Automix Dispenser Type 50 1:1	# 999507
35 Automix Tips Yellow 1:1/ Intra-Oral Tips Yellow	# 110424

Honigum Mono



Monophase VPS-based impression material

Indications: crown and bridge impressions, inlay, onlay and functional impressions, and all types of pickup impressions (i.e. implants).

Product benefits

- One-step precision impression
- Precise reproduction of the preparation line
- Precise detail reproduction
- Good hydrophilicity



Pack

1 Cartridge @ 380ml	
10 MixStar Tips White	
Honigum Mono Mixstar	# 999568
4 Cartridges @ 50ml	
12 Automix Tips Green 1:1	
12 Intraoral Tips Transparent	
Honigum Mono	# 999830
4 Cartridges @ 50ml	
8 Automix Tips Green 1:1	
8 Intraoral Tips Transparent	
Honigum Mono QuadFast	# 999839

Accessories

1 MixStar eMotion 230 V Int.	# 999482
50 MixStar Tips White	# 999567
1 Automix Dispenser Type 50 1:1	# 999507
50 Automix Tips Green 1:1	# 999400
50 Intraoral Tips Transparent	# 999490
1 Bottle @ 10ml DMG Tray Adhesive	# 999394

Honigum Heavy



Precision VPS-based impression material

Indications: crown and bridge impressions, inlay and onlay impressions, all types of pickup impressions (i.e. for implants).

Product benefits

- High final hardness
- Excellent stability - does not slump or run
- Easy to remove
- Homogenous bubble-free material



Pack

1 Cartridge @ 380ml	
10 MixStar Tips White	
Honigum Heavy	# 999537
Honigum Heavy Fast	# 999638

4 Cartridges @ 50ml	
12 Automix Tips Green 1:1	
Honigum Heavy	# 999766
Honigum Heavy Fast	# 999838

Accessories

1 MixStar eMotion 230 V Int.	# 999482
50 MixStar Tips White	# 999567
1 Automix Dispenser Type 50 1:1	# 999507
50 Automix Tips Green 1:1	# 999400
1 Bottle @ 10ml DMG Tray Adhesive	# 999394

StatusBlue



VPS-based situational impression material

Indications: situational impressions, the manufacture of temporaries or vacuum-formed stents and opposing arch impressions.

Product benefits

- High dimensional stability
- Long shelf life
- Repourable
- No time-consuming hand-mixing
- Excellent recovery after deformation



Pourable after 10 minutes

Pack

1 Cartridge @ 380ml	
10 MixStar Tips White	# 999693
8 Cartridges @ 50ml	
16 Automix Tips Pink 4:1	# 999826

Accessories

1 MixStar eMotion 230 V Int.	# 999482
50 MixStar Tips White	# 909567
1 Automix Dispenser Type 50 10:1	# 110411
25 Automix Tips Pink 4:1	# 999797

Temp Tabs



Available in the U.S. only.

Thermoplastic impression tab

Indication: for fabricating temporary crowns and bridges or quick bite registrations.

Product benefits

- Bio-compatible
- Quick 20 sec. setup (with air syringe)
- Easy to trim
- Reheatable
- Light-cure through tabs
- Stays clear for ID in the mouth
- Great control for flexibility
- No cartridge, gun or tray required
- No messy mixing or cleanup



Pack

72 Discs - True Blue
72 Tabs - Natural

143020
143033

DMG Tray Adhesive



Tray adhesive for all VPS materials

Indication: tray adhesive for bonding VPS materials with metal and plastic trays.

Product benefits

- Promotes the adhesion of VPS-based impression materials to the impression tray
- Easy to apply
- Short setting time after application
- Blue color for better visual control



Pack

1 Bottle @ 10ml

999394

LuxaBite



Bite registration material based on bisacrylic

Indications: fixation of impression posts for implant impressions, bite registrations.

Product benefits

- The hardest bite registration material available (Barcol hardness 25 after one hour)
- No compression or flexing when mounting
- Tasteless and odorless
- Excellent stability
- Easy to trim



Pack

1 Cartridge @ 50ml	
15 Automix Tips Yellow 10:1	# 110560

Accessories

1 Automix Dispenser Type 50 1:1	# 110411
25 Automix Tips Yellow 10:1	# 110609

O-Bite



VPS-based bite registration material

Indications: bite registration material, for application on bite forks for face-bows, key material, i.e. for intraoral needle-point registration.

Product benefits

- One of the hardest VPS-based bite registration materials available
- Superior fracture resistance
- Minimal bite resistance
- Fast-curing



Pack

4 Cartridges @ 50ml	
15 Automix Tips Pink 1:1	# 999765

Accessories

1 Automix Dispenser Type 50 1:1	# 999507
50 Automix Tips Pink 1:1	# 999202

MixStar eMotion



Mixing machine

Mixing machine for impression materials.

Product benefits

- Fully automatic
- 3 selectable speeds
- 2 timers for working and setting times
- Easy handling
- Suitable for foil bags and cartridges



Packaging

1 MixStar eMotion 230 V Int.

999482



Temporary care

Temporary

Temporary cementation

Luxatemp Ultra



Luxatemp Plus



Highly stable bisacrylic temporary crown and bridge material

Indications: temporary crowns and bridges, inlays and onlays, partial crowns, veneers and long-term temporaries.

Product benefits

- Industry-leading flexural strength
- Outstanding esthetics with added fluorescence
- Unsurpassed break resistance
- Excellent durability
- Long-term shade stability
- Great adaptation and fit
- Ideal for producing mock-ups



Pack

1 Smartmix Syringe @ 15gm	
10 Smartmix Tips Green-Blue	
Shade A2	# 110901
Shade B1	# 110904
Shade Bleach Light	# 110905
1 Cartridge @ 76gm	
15 Automix Tips Blue 10:1	
Shade A1	# 110906
Shade A2	# 110907
Shade A3	# 110908
Shade A3.5	# 110909
Shade B1	# 110910
Shade Bleach Light	# 110911

Accessories

25 Smartmix Tips Green-Blue	# 110991
25 Automix Tips Blue 10:1	# 110351
1 Automix Dispenser Type 50 10:1	# 110411

Bisacrylic temporary crown and bridge material

Indications: temporary crowns, bridges, inlays, onlays, partial crowns and veneers.

Product benefits

- Award-winning temporary material
- Excellent durability
- Proven precision-fit temporaries
- Biocompatible
- Low polymerization shrinkage
- High fracture resistance
- High flexural strength



Introductory kit

1 Cartridge @ 76gm	
1 Automix Dispenser Type 50 10:1	
15 Automix Tips Blue 10:1	
Shade A2	# 110400

Pack

1 Cartridge @ 76gm	
15 Automix Tips Blue 10:1	
Shade A1	# 110401
Shade A2	# 110402
Shade A3.5	# 110403
Shade B1	# 110404
Shade Bleach Light	# 110368

Economy pack

5 Cartridges @ 76gm	
75 Automix Tips Blue 10:1	
Shade A2	# 110406

Accessories

25 Automix Tips Blue 10:1	# 110351
1 Automix Dispenser Type 50 10:1	# 110411

Luxatemp Fluorescence



Bisacrylic temporary crown and bridge material with natural fluorescence

Indications: temporary crowns, bridges, inlays, onlays, partial crowns and veneers.

Product benefits

- Natural fluorescence
- Temporaries that look great in all lighting conditions
- Low polymerization shrinkage
- Excellent durability
- High fracture and abrasion resistance
- Excellent shade stability
- Suitable for long-term temporaries



Pack

1 Smartmix Syringe @ 15gm	
10 Smartmix Tips Green-Blue	
Shade A2	# 110719
Shade B1	# 110722
Shade Bleach Light	# 110723
1 Cartridge @ 76gm	
15 Automix Tips Blue 10:1	
Shade A1	# 110585
Shade A2	# 110586
Shade A3	# 110710
Shade A3.5	# 110587
Shade B1	# 110588
Shade Bleach Light	# 110589

Economy pack

5 Cartridges @ 76gm	
75 Automix Tips Blue 10:1	
Shade A2	# 110712
Shade A3	# 110713

Accessories

25 Smartmix Tips Green-Blue	# 110991
25 Automix Tips Blue 10:1	# 110351
1 Automix Dispenser Type 50 10:1	# 110411

LuxaCrown



Bisacrylic high-performance temporary solution with long-term stability

Indications: crown and bridge restorations: to restore the anatomical shape and long-term protection, to restore the masticatory function; for esthetic corrections.

Product benefits

- Reliable, long-term stability
- A wide range of applications
- Excellent fracture toughness and flexural strength
- Excellent polishability
- Optimal curing time
- Excellent workability
- Only one visit required



Pack

1 Cartridge @ 50ml	
15 Automix Tips Blue 10:1	
Shade A1	# 120970
Shade A2	# 120971
Shade A3	# 120972
Shade A3.5	# 120973
Shade B1	# 120974

Accessories

1 Automix Dispenser Type 50 10:1	# 110411
25 Automix Tips Blue 10:1	# 110351

LuxaFlow Ultra



Flowable light-cure composite

Indications: enhancement and repair of bisacrylic temporaries; small class III, IV and V cavity fillings; minimally invasive fillings; underfillings.

Product benefits

- Light-cure material
- Excellent esthetics
- High polishability
- Non-slumping formula with ideal flow properties
- Radiopaque



Introductory kit

- | | |
|--------------------------|----------|
| 1 Syringes @ 1.5gm | |
| 20 Luer-Lock Tips Black | |
| Shades: A1, A2, A3.5, B1 | # 224000 |

Refill pack

- | | |
|-------------------------|----------|
| 2 Syringes @ 1.5gm | |
| 10 Luer-Lock Tips Black | |
| Shade A1 | # 224001 |
| Shade A2 | # 224002 |
| Shade A3 | # 224003 |
| Shade A3.5 | # 224004 |
| Shade B1 | # 224005 |

Accessories

- | | |
|-------------------------|----------|
| 20 Luer-Lock Tips Black | # 211759 |
|-------------------------|----------|

LuxaFlow



Flowable light-cure composite

Indications: enhancement and repair of bisacrylic temporaries; small class III, IV and V cavity fillings; minimally invasive fillings; underfillings.

Product benefits

- Light-cure material
- Good esthetics
- High polishability
- Non-slumping formula with good flow properties
- Radiopaque



Introductory kit

- | | |
|--------------------------|----------|
| 1 Syringes @ 1.5gm | |
| 20 Luer-Lock Tips Black | |
| Shades: A1, A2, A3.5, B1 | # 211751 |

Refill pack

- | | |
|-------------------------|----------|
| 2 Syringes @ 1.5gm | |
| 10 Luer-Lock Tips Black | |
| Shade A1 | # 211753 |
| Shade A2 | # 211754 |
| Shade A3.5 | # 211755 |
| Shade B1 | # 211756 |

Accessories

- | | |
|-------------------------|----------|
| 20 Luer-Lock Tips Black | # 211759 |
|-------------------------|----------|

LuxaGlaze



Light-cure glaze for repairing and sealing temporary crowns and bridges

Indications: glazing the surfaces of temporary crowns and bridges.

Product benefits

- High-gloss finish without polishing
- Greater protection; high stain resistance
- Excellent bond strength
- Low surface roughness
- Easy to apply



Pack

- 1 Bottle @ 5ml
- 25 Brushes
- 1 Mixing Palette

212075

TempoCem ID



Esthetic and transparent temporary luting cement

Indications: luting of temporary crowns, bridges, inlays, onlays, veneers and implant-supported interim prostheses.

Product benefits

- Optimal transparency for highly esthetic results
- Invisible below the gum line
- Detectable for easy removal of excess
- User-friendly, easy to apply
- Temporary luting, long-term reliability
- Eugenol free formulation
- No sticking to instruments



Pack

- 1 Smartmix Syringe @ 5ml
- 20 Smartmix Tips Green

213200

Accessories

- 25 Smartmix Tips Green

110728

TempoCem NE



Eugenol-free, zinc oxide-based temporary luting cement

Indications: luting of temporary crowns, bridges, inlays and onlays.

Product benefits

- Universal use
- Compatible with resin-based restoration materials
- Direct application
- Optimal adhesion
- Easy removal of excess
- Accurate fit thanks to low film thickness



Pack

2 Smartmix Syringes @ 5ml	
10 Smartmix Tips	# 212104
1 Cartridge @ 25ml	
40 Automix Tips Blue 1:1	# 110302

Accessories

50 Smartmix Tips Short	# 212040
50 Automix Tips Blue 1:1	# 110266
1 Automix Dispenser Type 25 1:1	# 110253

TempoCem



Eugenol-zinc oxide-based temporary luting cement

Indications: luting of temporary provisional crowns, bridges, inlays and onlays as well as implant-borne prostheses.

Product benefits

- Direct application
- Optimal adhesion
- Easy removal of excess



Pack

2 Smartmix Syringes @ 5ml	
10 Smartmix Tips	# 212129
1 Cartridge @ 25ml	
40 Automix Tips Blue 1:1	# 110300

Accessories

50 Smartmix Tips Short	# 212040
50 Automix Tips Blue 1:1	# 110266
1 Automix Dispenser Type 25 1:1	# 110253



Permanent Prosthetics

Luting cements

Amalgam alloys

PermaCem 2.0



Self-adhesive, dual-curing composite luting cement

Indications: permanent luting of inlays, onlays, crowns, bridges, root posts and permanent luting of crowns and bridges on implant abutments.

Product benefits

- MDP monomer formula provides a stronger chemical bond
- Easy clean-up formulation
- Bonds to all substrates including Zirconium
- No etching step needed
- Low water sorption rate



Pack

- 1 Smartmix Syringe @ 9gm
- 15 Smartmix Tips Short
- 5 Smartmix Tips Endo M
- Shade Transparent # 213368
- Shade A2 Universal # 213366
- Shade A3 Opaque # 213367

Accessories

- 50 Smartmix Tips Short # 212040
- 20 Smartmix Tips Endo M # 213373

PermaCem Dual



Adhesive, dual-curing luting cement

Indications: final cementation of crowns, bridges, inlays and onlays.

Product benefits

- Reduced setting time due to light-cure
- Universal use
- Also suitable for all-ceramic work
- Insoluble in a wet environment
- Low film thickness for perfect fit
- Easy removal of excess



Pack

- 1 Cartridge @ 52gm
- 40 Automix Tips Blue 1:1 # 110525

Accessories

- 50 Automix Tips Blue 1:1 # 110266
- 1 Automix Dispenser Type 25 1:1 # 110253

Vitique



Adhesive, light-curing luting composite for veneers

Indication: highly esthetic cementation of ceramic or composite veneers.

Product benefits

- Highly esthetic
- Complete veneer cementation system
- Outstanding shade reproduction and selection
- Exact shade match (Try-in Paste and cement)
- Easy removal of excess material
- High shade stability
- Practical user support

Speciality

Your adhesive partner for Vitique: Ecosite Bond (page 28).



Cementation System

- 3 Syringes @ 6gm Esthetic Resin Cement, Shades: A2.5, B1, Transparent
- 3 Syringes @ 3.9gm Try-in Paste, Shades: A2.5, B1, Transparent
- 1 Syringe @ 2ml DMG Etching Gel
- 1 Bottle @ 5ml TECO
- 1 Bottle @ 3ml Vitique Silane Adhesive
- 1 Bottle @ 3ml Vitique Silane Activator
- 50 Veneer Tips
- Accessories # 213080

Cementation Kit

- 3 Syringes @ 6gm Esthetic Resin Cement, Shades: A2.5, B1, Transparent
- 3 Syringes @ 3.9gm Try-in Paste, Shades: A2.5, B1, Transparent
- 50 Veneer Tips # 213081

Accessory Kit

- 1 Syringe @ 2ml DMG Etching Gel
- 1 Bottle @ 5ml TECO
- 1 Bottle @ 3ml Vitique Silane Adhesive
- 1 Bottle @ 3ml Vitique Silane Activator
- Accessories # 213082

Refill pack

- 1 Syringe @ 6gm Esthetic Resin Cement, 10 Veneer Tips
- Shade A1 # 213038
- Shade A2.5 # 213039

Vitique Silane



For ceramic and luting composites

Indications: conditioning of siliceous ceramic substrates.

Product benefits

- Reliable bond
- 1:1 mixing ratio
- Fresh mix for each application



Pack

- 1 Bottle @ 3ml Vitique Silane Adhesive
- 1 Bottle @ 3ml Vitique Silane Activator
- 50 Brushes
- 1 Brush Holder # 213118

- Shade A4 # 213040
- Shade B1 # 213041
- Shade Bleach Light # 213042
- Shade Transparent # 213043
- Shade White # 213044
- Shade Pink # 213045

- 1 Syringe @ 3.9gm Try-in Paste, 10 Veneer Tips
- Shade A1 # 213048
- Shade A2.5 # 213049
- Shade A4 # 213050
- Shade B1 # 213051
- Shade Bleach Light # 213052
- Shade Transparent # 213053
- Shade White # 213054
- Shade Pink # 213055

Accessories

- 100 Veneer Tips # 213057

Amalgam Alloys



The alloy type you want, and the consistent mix and optimum handling you need

Twisting and pinching is eliminated with the self-activating capsule, and the one-step trituration eliminates the need for an activator tool. Convenient, color-coded capsules are easy to differentiate between types and spills.

Premium Dispersed Phase Amalgam Alloy: Fast and Regular Set

Ensure good marginal integrity and eliminate open contacts while providing longer lasting, corrosion resistant restorations.



Pack

Premium Dispersed Phase Alloy Fast Set

- 50 Capsules - Single Spill - Cap: Green, Body: White # 61009
- 50 Capsules - Double Spill - Cap: Dark Blue, Body: White # 61013
- 50 Capsules - Triple Spill - Cap: Yellow, Body: White # 61017
- 500 Capsules - Single Spill - Cap: Green, Body: White # 61021
- 500 Capsules - Double Spill - Cap: Dark Blue, Body: White # 61025
- 500 Capsules - Triple Spill - Cap: Yellow, Body: White # 61029

Premium Dispersed Phase Alloy Regular Set

- 50 Capsules - Single Spill - Cap: Gray, Body: Green # 61008
- 50 Capsules - Double Spill - Cap: Gray, Body: Dark Blue # 61012
- 50 Capsules - Triple Spill - Cap: Gray, Body: Yellow # 61016
- 500 Capsules - Single Spill - Cap: Gray, Body: Green # 61020
- 500 Capsules - Double Spill - Cap: Gray, Body: Dark Blue # 61024
- 500 Capsules - Triple Spill - Cap: Gray, Body: Yellow # 61028

The alloy type you want, and the consistent mix and optimum handling you need

Twisting and pinching is eliminated with the self-activating capsule, and the one-step trituration eliminates the need for an activator tool. Convenient, color-coded capsules are easy to differentiate between types and spills.

Type-T Spherical Amalgam Alloy

The Type-T Spherical Amalgam Alloy is the strongest type of alloy made that resists fracture and ditching. Its fast setting allows for immediate packing and carving.



Pack

Type-T High Copper Spherical Alloy

- 50 Capsules - Single Spill - Cap: Aqua, Body: Royal Blue # 61039
- 50 Capsules - Double Spill - Cap: Aqua, Body: Grey # 61040
- 50 Capsules - Triple Spill - Cap: Aqua, Body: White # 61041
- 500 Capsules - Single Spill - Cap: Aqua, Body: Royal Blue # 61035
- 500 Capsules - Double Spill - Cap: Aqua, Body: Grey # 61036
- 500 Capsules - Triple Spill - Cap: Aqua, Body: White # 61037

Variable Speed Amalgamator



Your amalgamator of choice

Product benefits

- Built-in timer to mix and blend the pillow (5-30 secs.)
- Reinforced fiberglass arm design
- Vibration absorbers
- Reduced motor noise
- High-impact case
- No maintenance required
- Powerful high-torque motor to achieve a homogeneous amalgam blend
- 3 speed settings: high (4,800 rpm), medium (4,200 rpm) and low (3,600 rpm)



Equipment Amalgamator

- | | |
|----------------------------------|---------|
| 1 Variable Speed Amalgamator | # 61033 |
| 9-1/2" (L) x 7-1/2" (W) x 4" (H) | |





Dispensers

Automix dispensers

Safetip dispensers

Safetip Dispenser Pro



Ergonomically designed dispenser

Indication: direct application of all commercially available composite tips.

Product benefits

- Easy dispensing thanks to parallel handles
- Precise treatment through straight-line motion
- Ergonomic handling, even for small hands
- Autoclavable

Speciality

Ideal for use with

- Ecosite Elements
- Ecosite One
- Ecosite Bulk Fill



Pack

1 Safetip Dispenser Pro

222829

Safetip Dispenser



Easy to use composite tip dispenser

Indication: direct application of all commercially available composite tips.

Product benefits

- Direct application
- Hygienic application
- Autoclavable
- Ergonomic handling

Speciality

Ideal for use with

- Ecosite Elements
- Ecosite One
- Ecosite Bulk Fill



Pack

1 Safetip Dispenser

220600

Automix Dispensers



Reliable, easy-to-use delivery system

Product benefits

- Homogeneous, bubble-free mixing
- Trouble-free dispensing
- Compatible with all commercially available 25ml and 50ml cartridges
- Available for mixing ratio 1:1, 10:1 and 4:1 Automix Guns
- Safe and clean application with easy handling
- Autoclavable



Pack

1 Type 25 1:1 Automix Gun

10253

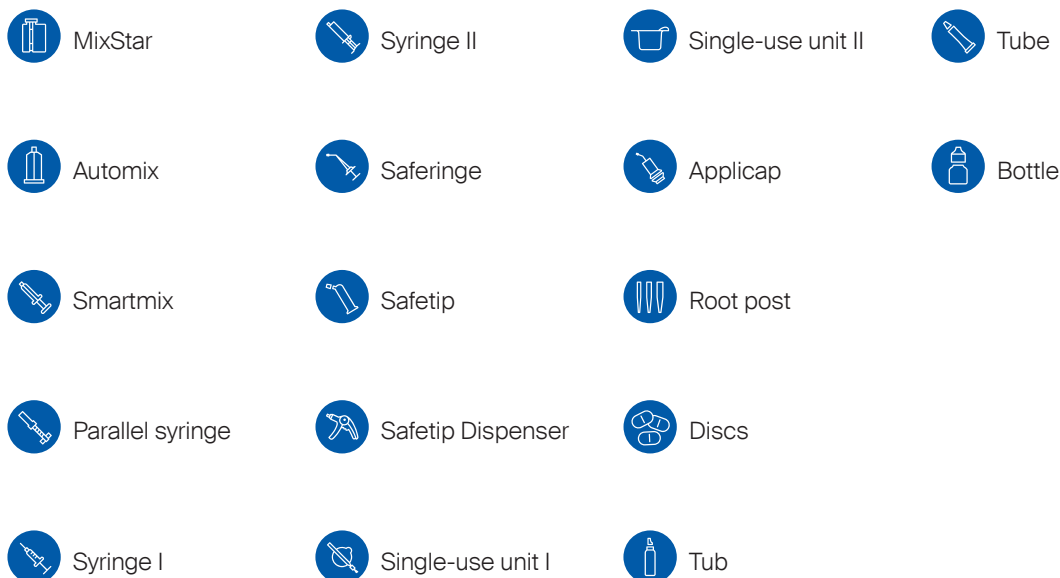
1 Type 50 1:1 Automix Gun

999507

1 Type 50 10:1/4:1 Automix Gun

110411

DMG packaging type symbols



Index

40% Etch Gel 28	Honigum Pro Light 33	LuxaPrint Ortho 14
Additional Accessories 58	Honigum Pro Mono 33	LuxaPrint Ortho Flex 15
Amalgam Alloys 49	Honigum Pro Putty 34	LuxaPrint Ortho Plus 14
Application Tips 71	I.B. Brushes 57	LuxaPrint Tray 16
Automix Dispensers 53	Icon Etch 23	Luxatemp Fluorescence 42
DentaMile connect 9	Icon Proximal 22	Luxatemp Plus 41
DentaMile Desk MC-5 11	Icon Smooth Surface 22	Luxatemp Ultra 41
DentaMile Lab 5 13	Ionosit Baseline 27	MixStar eMotion Machine 39
DentaMile Lab 5 Pro 13	Kolorz ClearShield 5% Sodium Fluoride Varnish 19	MixStar Tips 72
DentaMile Wash MC 12	Kolorz Neutral Fluoride Foam 21	O-Bite 38
DentaMile Cure MC 12	Kolorz Prophylaxis Paste 19	PermaCem 2.0 47
DMG 3Decure 11	Kolorz Sixty-Second Fluoride Foam 20	PermaCem Dual 47
DMG 3Demax 10	Kolorz Sixty-Second Fluoride Gel 20	Safetip Dispenser 53
DMG 3Dewash 10	Kolorz Topical Anesthetic Gel 21	Safetip Dispenser Pro 53
DMG MiniDam 23	LuxaBite 38	Spirapost 31
DMG Tray Adhesive 37	LuxaBond Total Etch 27	StatusBlue 36
Ecosite Bond 28	LuxaCore Z Dual 30	Temp Tabs 37
Ecosite Bulk Fill 26	LuxaCrown 42	TempoCem 45
Ecosite Elements 25	LuxaFlow Ultra 43	TempoCem ID 44
Ecosite One 26	LuxaFlow 43	TempoCem NE 45
Honigum Heavy 36	LuxaGlaze 44	Vitique 48
Honigum Light 35	LuxaPost 30	Vitique Silane 48
Honigum Mono 35	LuxaPrint Model 15	Variable Speed Amalgamator 50
Honigum Pro Heavy 34		Zekrya Gingival Protector 57

DMG America, LLC

65 Challenger Road, Suite 340, Ridgefield Park, NJ 07660

tel: 800.662.6383 email: info@dmg-america.com

web: www.dmg-america.com

